

AdaptiBar MBE Simulator and Prep

FEATURE HIGHLIGHTS

Welcome

General

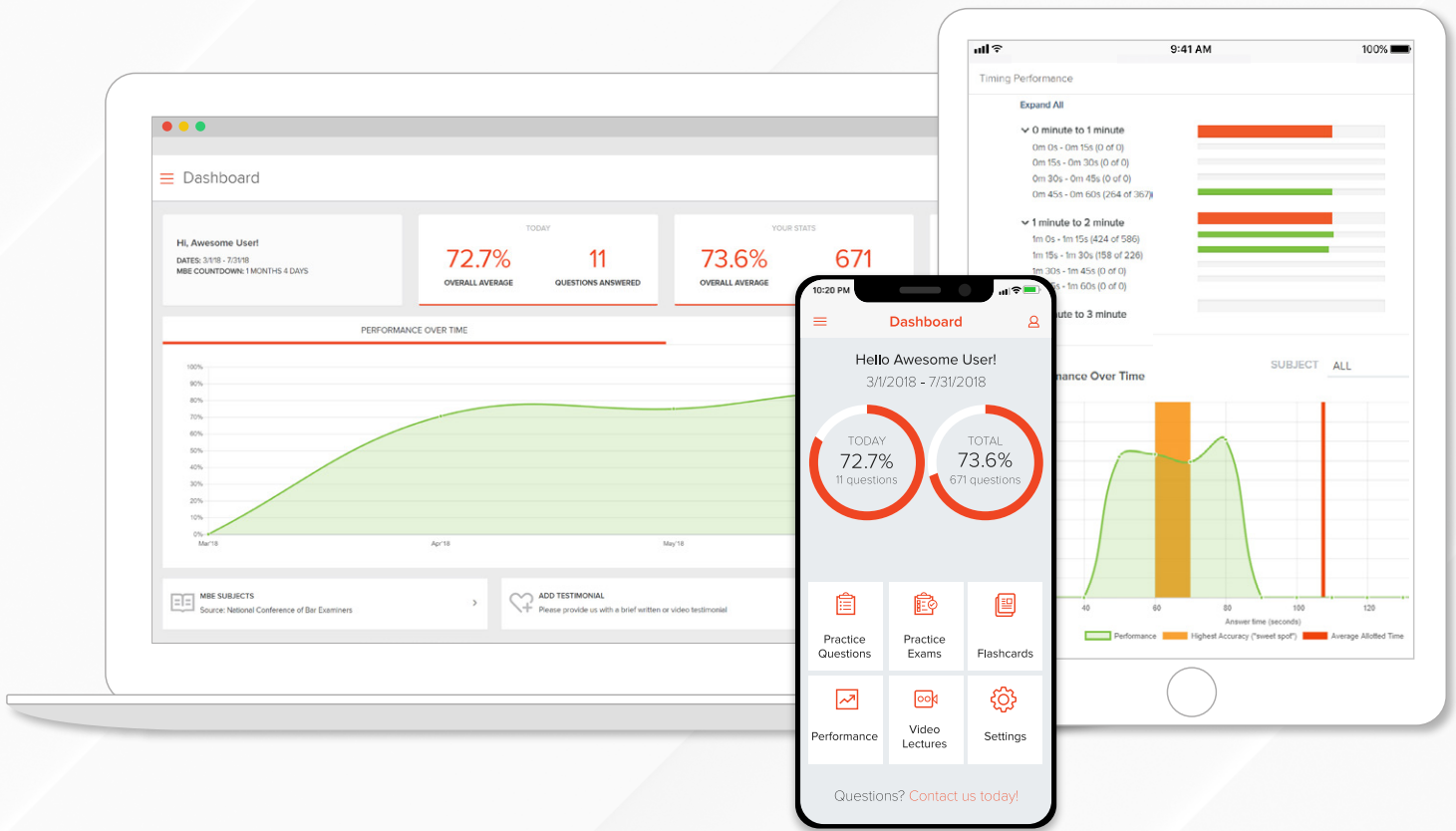
Answering Questions

Tracking Performance

Flashcards

Assignments

Helpful Tips



Congrats! You are joining the thousands of bar takers every year who **use AdaptiBar to prepare for and pass the bar exam.**

- ✓ Every licensed MBE question
- ✓ Detailed explanations
- ✓ Practice questions & practice exams modes
- ✓ Patented adaptive technology
- ✓ Subject & timing diagnostics
- ✓ Mobile apps included

Continue on to learn more about the features that make AdaptiBar the best MBE prep tool available.



General

Dashboard

Here, you will be able to navigate to all of the program features as well as view your overall accuracy rate. You will also be able to quickly view your performance over time, as well as your performance in each subject.

Settings

AdaptiBar's settings page allows you to customize the program to your individual preferences. There are a number of options to explore. Make sure to check them out to ensure the program works best for you. This is also where you will find ADA timing accommodation options.

Answering Questions

Questions Mode

To access this mode, click Practice, Questions, then select the subject(s) you would like to study. You will be presented with the detailed explanation immediately after answering each question. AdaptiBar's patented adaptive algorithm evaluates your performance and determines which questions are presented to you based on your current studying needs. Because of this, AdaptiBar suggests you remain predominantly in this mode.

Exams Mode

To access this mode, click Practice, Exams, then select the subject(s)/subtopic(s) and number of questions you would like to include in the exam. The main function of Exams mode is to simulate real exam conditions. You will see the answers and explanations for each question after you complete and submit the exam.

Tracking Performance

Subject Performance

The subject performance graph will display your accuracy rate in each subject and subtopic, as well as the number of questions you have answered correctly out of the total number answered. You can also adjust the date range viewed and analyze your performance over time in all subjects or a specific subject.

Past Questions

The Past Questions option allows you to generate a customized report of all the questions that you previously answered in both program modes: Questions and Exams. Filter by date, keyword, a combination of subjects and subtopics, and/or questions you answered correct or incorrect. Then, review these previously answered questions within the program or download as a PDF.

Past Performance

Diagnose your strengths and weaknesses and track your progress in sets of 350 questions here. As you answer questions in AdaptiBar, the table will automatically calculate your accuracy rates per 350 questions to show percentage increases and decreases in progress for each subject/subtopic. This feature clearly shows you which subtopics you should be reviewing in your outlines and will help you gauge how effectively you are preparing for the MBE.

Timing Analysis

The timing performance page provides you with several opportunities to analyze how efficiently you are answering MBE questions.

NOTE: Timing analyzes your performance within Questions mode only. Questions answered within Exams mode are not included.

On the MBE, you have 1 minute and 48 seconds to answer each question. AdaptiBar reflects the tension of real-exam conditions and monitors the time it takes you to answer each question, allowing you to develop and refine your internal timing. AdaptiBar's timing performance calculates your "sweet spot," or the time at which you answered the most questions with the greatest accuracy.

Flashcards

Access your Smart Online Flashcards by clicking on the Flashcards tab in the left navigation panel. AdaptiBar's flashcards are presented in a Question-Answer format and can be adjusted to focus on specific subtopic(s) if you choose. Every user prepares with flashcards differently, so the AdaptiBar Team has made it possible to sort and pull flashcards based on your individual preference.

Read the question presented on the front of the card, then click the ***Flip Card*** button to view the answer. The system automatically tracks which flashcards you flip to the backside, but it is up to you to mark the flashcard as correct or incorrect based on how well you knew the answer given. Also, next to the flip icon, you can click to go to the ***Next*** or ***Previous*** flashcard.

You may also type personal notes on the backside that will automatically be saved and displayed the next time you flip that flashcard. When the flashcards are presented, you will see the subject and subtopic displayed in the top right-hand corner of the card and the flashcard number in the top left-hand corner of the card.

Performance and Setting tabs are available to the right of the flashcards.

Assignments

When your professor assigns you an assignment, you will see a notification next to Assignments in the left navigation panel. You may also receive an email that your administrator has created a new AdaptiBar assignment with the name of the assignment, who created it, the dates it is available, the time zone, and the number of questions.

When you open the Assignments page, you will see the name of your assignment, the number of questions, the mode (Questions or Exams), the dates the assignment is available, the time limit if one was set by your professor, the status of the assignment (complete or incomplete), the score and a report if available. Click on your assignment to begin.

All of your assignments, both complete and incomplete, will be listed on the Assignments page. Assignments that have not been completed will appear in black letters and the ones that have been completed are greyed out with a score and a report available. The Assignments will all have their status as either complete or incomplete. Your professor receives the information from assignments that have been completed. Your professor also has access to all performance information.

Helpful Tips

- Like to cross out answer choices or highlight important passages of a question? We offer these features within the program in both Questions and Exams mode!
- Need some guidance? Check out our [Suggested Preparation Method!](#)
- Generally speaking, you want to be shooting for an overall accuracy rate of at least 70% in order to be in a good position going into the exam. When reviewing your performance, any area where you are scoring below a 70% should be viewed as a weakness. Study your outlines in those areas of law in order to make the necessary improvements.

Learn More

Contact us at **(877) 466-1250** or email us at **support@adaptibar.com** if you have any questions.

adaptibar.com