



LIBRARY MATERIALS

PRINT
Books, journals,
magazines, music scores

ONLINE
Databases, eBooks,
journals, scholarly articles,
tutorials, grad school practice tests

MEDIA
Streaming videos, DVDs,
streaming music databases, music CDs

EQUIPMENT & TECH
Cameras, laptops, tablets,
headphones, microphones, audio
recorders and more

DIGITAL ARCHIVES: ARCHIVES.STETSON.EDU

Explore Stetson history through a
collection of more than 100,000 images,
student newspapers, yearbooks and more.

*For the health and safety of the Stetson
community, library access, hours, services
and other operations are subject to change
as we respond to the COVID-19 situation.*

LIBRARY SERVICES

- ▶ Wi-Fi, 24-hour study/computer lab on the ground floor
- ▶ 48 computers with Microsoft Office software (Word, Excel, Access and PowerPoint), Canvas and campus network
- ▶ Printers, copier and scanner
- ▶ 3D printers + 3D scanners

ASK A LIBRARIAN

Research Librarians are available to help with finding credible sources, using databases, formatting citations and answering any questions you have about research. Call or text 386-747-9028, or fill out the form on stetson.edu/library/AAL.

INTERLIBRARY LOAN (ILL) SYSTEM

This service is available to Stetson University faculty, students and staff. To aid in your research, we will borrow items from other libraries that are not held in the Stetson Library. Visit stetson.edu/library/ill.

COURSE RESERVE READINGS

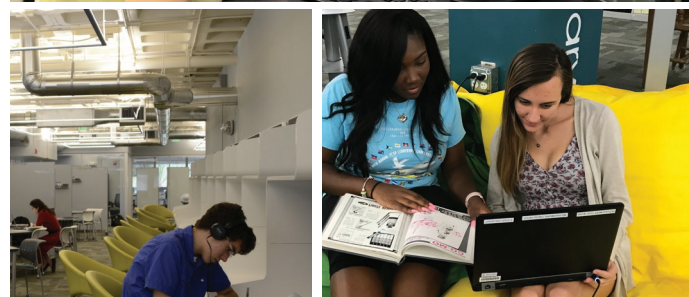
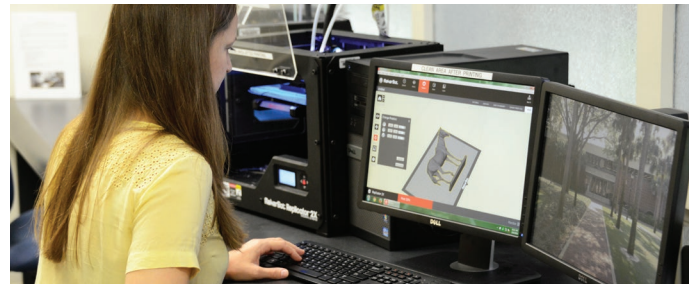
Professors' reserve readings are available at the front desk and can be accessed by course name, course number or instructor from the library website. Most reserve materials are **Library Use Only** for two hours.

GOVERNMENT INFORMATION

Government publications, in print or online, are excellent primary sources of information. Recent government publications are issued online and are linked from OneSearch. A historical collection of print documents is on the lower level of the library.

GROUP STUDY ROOMS

Available for reservation 24 hours in advance or on a first-come, first-served basis. Visit stetson.edu/library/rooms.



STETSON UNIVERSITY

duPont-Ball Library
421 N. Woodland Blvd., Unit 8418
DeLand, FL 32723

QUICK REFERENCE

OPERATING HOURS

Monday-Thursday 8 a.m. - Midnight
Friday 8 a.m. - 6 p.m.
Saturday 11 a.m. - 6 p.m.
Sunday 11 a.m. - Midnight

HOLIDAY HOURS

Visit stetson.edu/library/calendar

PHONE

386-822-7183

ASK A LIBRARIAN

Call or text 386-747-9028 or stop in for assistance during these hours:

Monday-Thursday 10 a.m. - 10 p.m.
Friday 10 a.m. - 5 p.m.
Saturday 11 a.m. - 6 p.m.
Sunday 2 p.m. - 10 p.m.

COMPLETE LIST OF FACULTY AND STAFF

Visit stetson.edu/library/staff

FAQ

Visit stetson.edu/library/faq

STETSON.EDU/LIBRARY

@StetsonuLibrary
 @StetsonuLibrary
 stetsonu.library

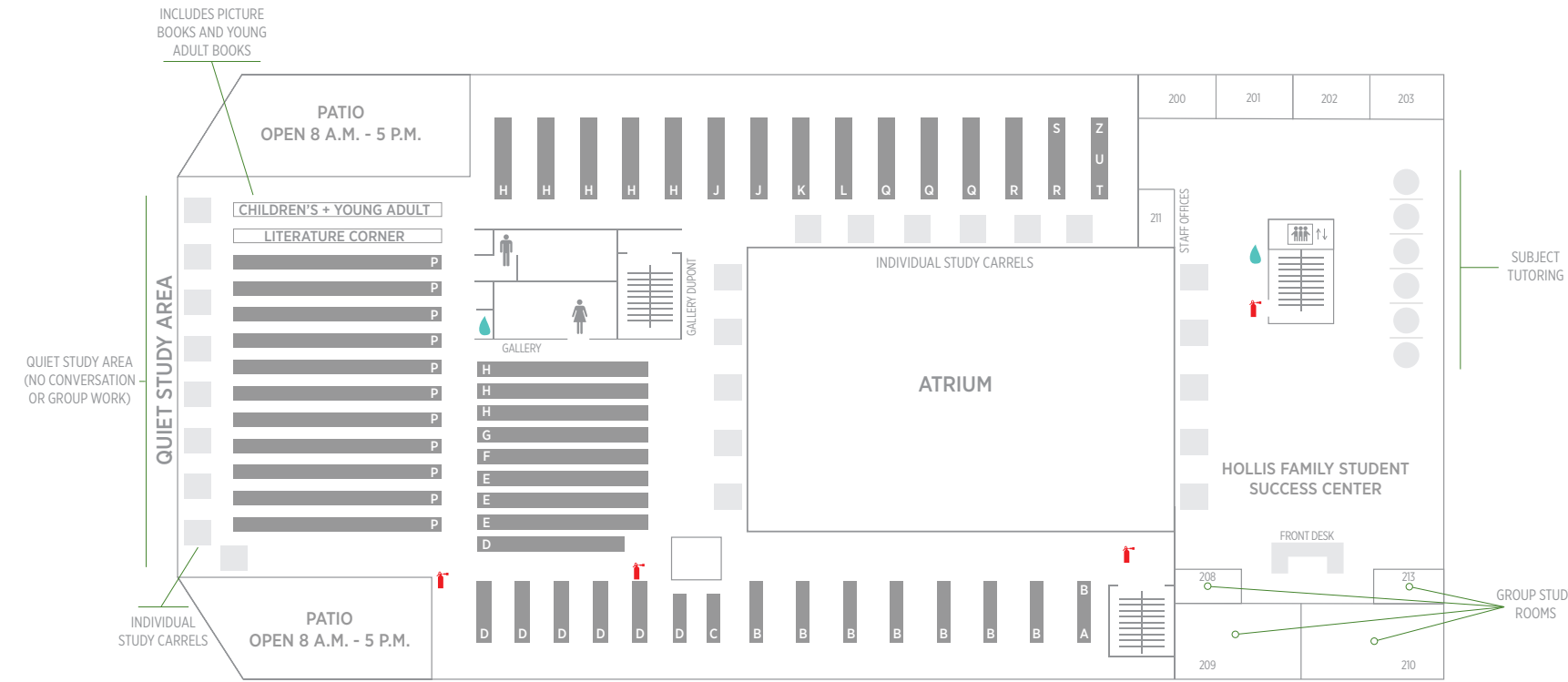
2022-2023



DUPONT-BALL LIBRARY



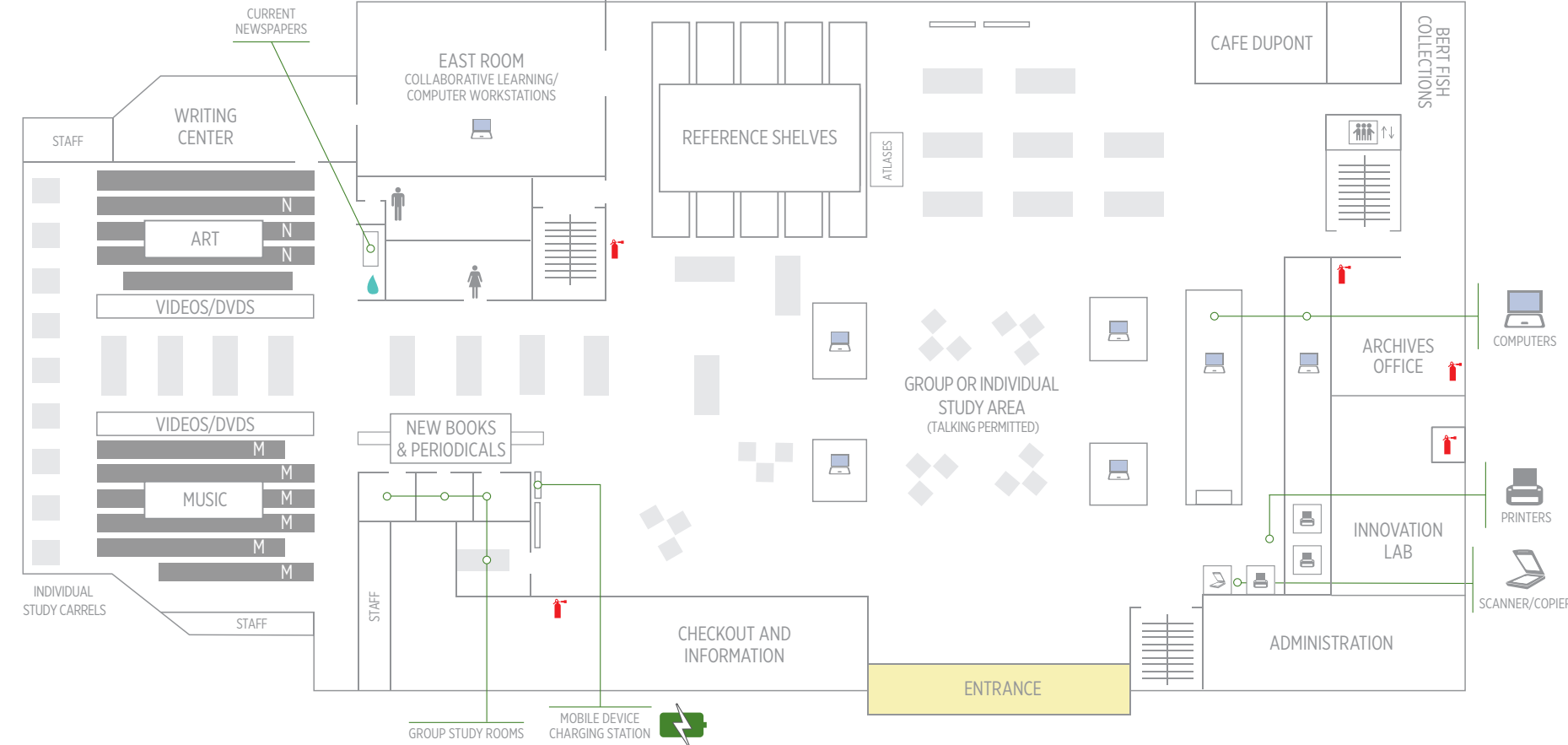
UPPER LEVEL MEZZANINE



LIBRARY OF CONGRESS CLASSIFICATION CHART

- | | | |
|---|----------------------------|----------------------------------|
| A) MUSEUMS. THE HUMANITIES | H) SOCIAL SCIENCES | Q) SCIENCE |
| B) PHILOSOPHY. PSYCHOLOGY. RELIGION | J) POLITICAL SCIENCE | R) MEDICINE |
| C) HISTORY OF CIVILIZATION. ARCHAEOLOGY | K) LAW | S) AGRICULTURE |
| D) HISTORY: GENERAL | L) EDUCATION | T) TECHNOLOGY |
| E) HISTORY: UNITED STATES | M) MUSIC | U) MILITARY SCIENCE |
| F) LOCAL U.S. | N) FINE ARTS | V) NAVAL SCIENCE |
| G) GEOGRAPHY, ANTHROPOLOGY | P) LANGUAGE AND LITERATURE | Z) BIBLIOGRAPHY, LIBRARY SCIENCE |

MAIN FLOOR



MUSIC RESOURCES

THE JENKINS MUSIC COLLECTION
Physical holdings available for checkout, which include books and scores. CDs are kept at the front desk.



DATABASES

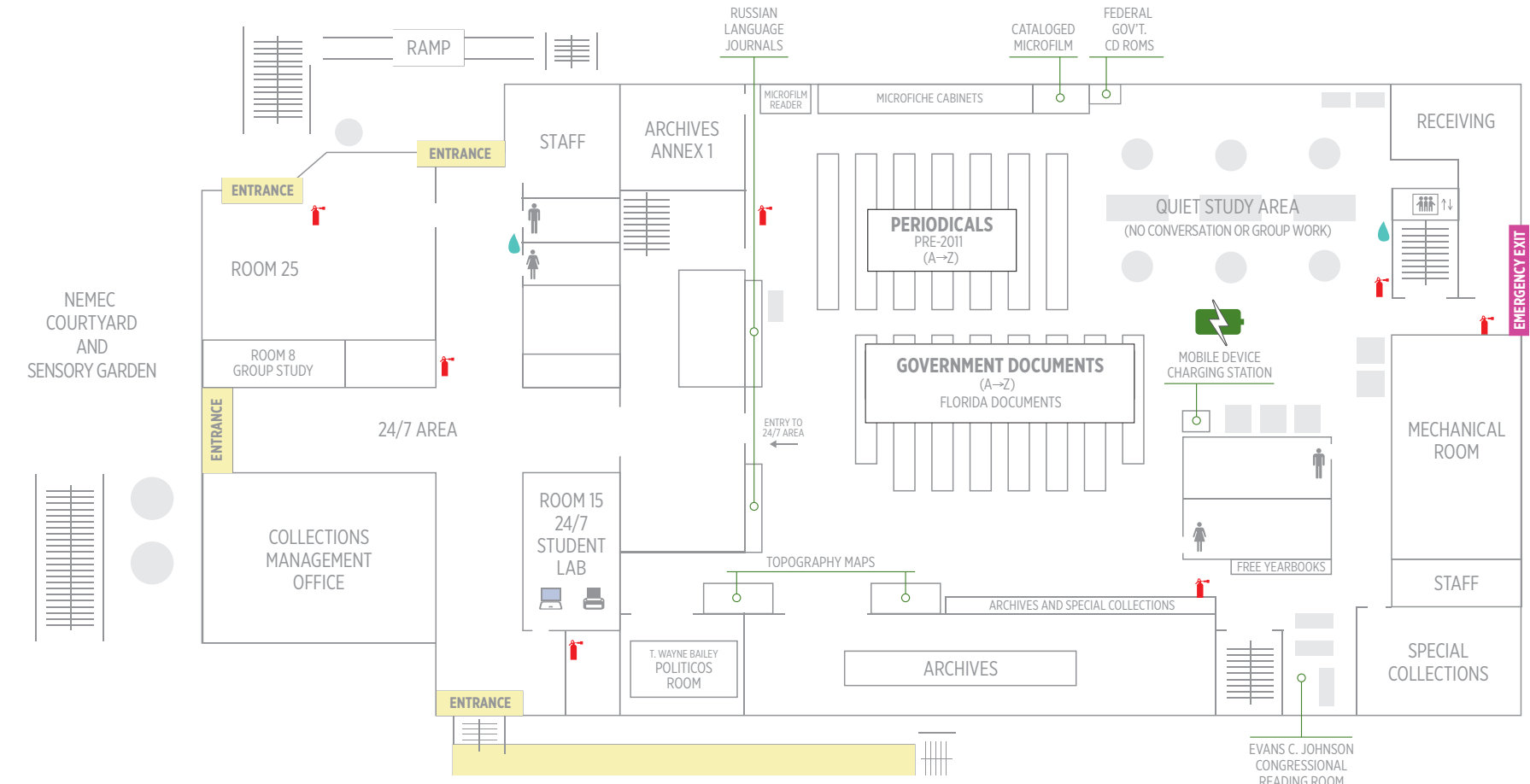
The library offers more than 200 databases that include journal and magazine articles, book chapters, statistical data, streaming video, streaming music and much more.

Choose **Databases** on the library's home page at stetson.edu/library to find databases by title or by subject.

ONESEARCH

Use the OneSearch box on the library's homepage to search multiple library databases plus the library's collection of books, ebooks, DVDs, streaming videos, scores and government documents.

GROUND FLOOR



ACCESS LIBRARY MATERIALS FROM ANYWHERE

24/7 AREA
8-L GROUP STUDY ROOM
15-L 24/7 STUDENT LAB
LIBRARY COLLECTIONS MANAGEMENT OFFICE
25-L AUDITORIUM CLASSROOM



These prizes are awarded annually to first-year students whose papers show the most effective use of research sources. For more information, visit stetson.edu/library/researchprize.